

Corporate Overview

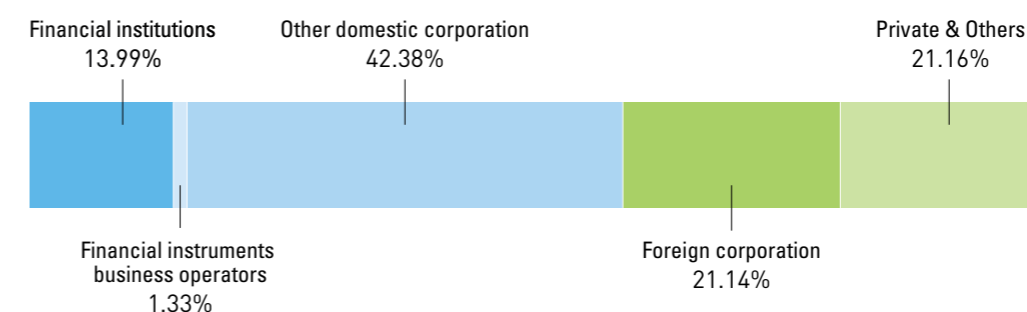
Company Name	METAWATER Co., Ltd.	
English Name	METAWATER Co., Ltd.	
Main Business Activities	Design and construction of equipment for water treatment plants, sewage treatment plants, and waste treatment facilities; design, manufacture, and sale of various devices; implementation of repair work; provision of services including operation management.	
Construction Industry Qualifications	Civil engineering work, building work, electrical work, plumbing work, tile, brick and block work, machine and equipment installation work, telecommunication work, water and sewage facilities work, sanitation facilities work.	
Establishment	April 1, 2008	
Chairman and Representative Director	Yasushi Nakamura	
Number of employee	3,082	*As of March 31, 2020, consolidated
List of bases	Head Office: JR Kanda Manseibashi Bldg., 1-25 Kandasuda-cho, Chiyoda-ku, Tokyo 101-0041 TEL:+81-(0)3-6853-7300 Hino Branch: 3-1-30 Asahigaoka, Hino, Tokyo 191-0065 TEL:+81-(0)42-589-6900 Nagoya Branch: Nagoya Prime Central Tower, 2-27-8 Meieki, Nishi-ku, Nagoya, Aichi 451-0045 TEL:+81-(0)52-884-6800	
Main sales bases	Tokyo (Headquarters), Sapporo, Sendai, Yokohama, Nagoya, Osaka, Hiroshima, Takamatsu, Fukuoka	
R&D Centers	Handa (Aichi), Ichihara (Chiba), Chiyoda-ku (Tokyo)	
Main group companies	METAWATER SERVICES Co., Ltd.* METAWATER USA, INC.* Aqua-Aerobic Systems, Inc.* Wigen Companies, Inc.* Mecana Umwelttechnik GmbH* FUCHS Enprotec GmbH* Rood Wit Blauw Holding B.V.	METAWATER TECH Co., Ltd. SIC Co., Ltd. Toriden-Shoji Co. Akebono Engineering Co. Water Next Yokohama Co., Ltd.* Techno Clean Hokuso Co.* Aqua Service Aichi Co.*
Overseas bases	United States, Netherlands, Switzerland, Germany, Vietnam, Cambodia, Singapore	



Stock-related matters As of March 31, 2020

Stock Exchange listing	First section of the Tokyo Stock Exchange Industrial Classification : Electric Power and Gas. (code: 9551)
Total number of authorized shares	70,000,000 shares
Total number of issued shares	25,923,500 shares
Number of shareholders	3,720

Breakdown of shareholders

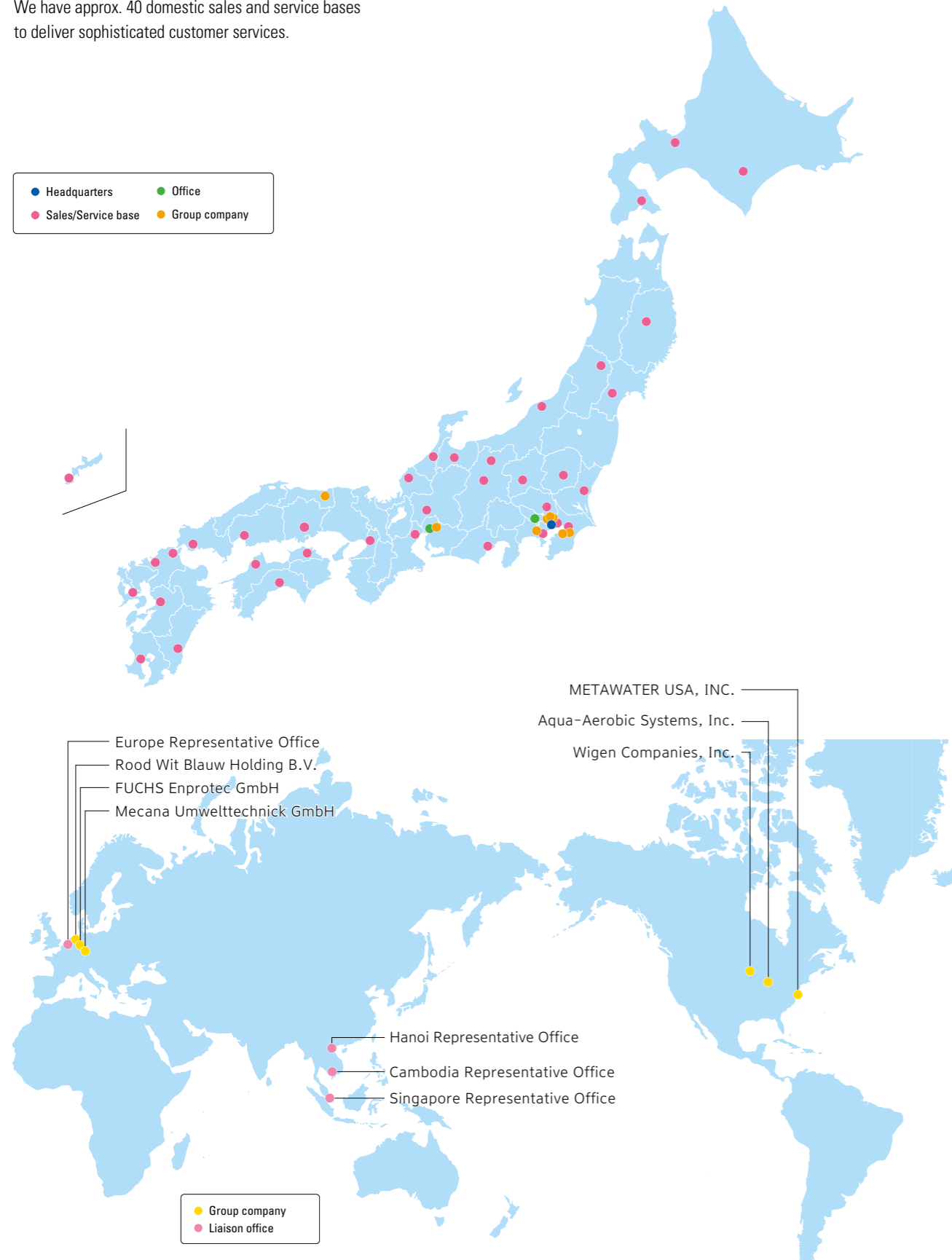


Status of dominant shareholders (Top 10)

Name of shareholder	Number of shares owned (1,000 shares)	Percentage of shares owned (%)
NGK INSULATORS, LTD.	5,500	25.32
Fuji Electric Co., Ltd.	5,300	24.40
The Master Trust Bank of Japan, Ltd. (Trust account)	1,163	5.36
JP MORGAN CHASE BANK 385632	863	3.98
Japan Trustee Services Bank, Ltd. (Trust account)	833	3.84
GOVERNMENT OF NORWAY	671	3.09
Japan Trustee Services Bank, Ltd. (Trust account 9)	425	1.96
The Nomura Trust and Banking Co., Ltd. (Trust account)	346	1.59
CREDIT SUISSE AG, DUBLIN BRANCH PRIME CLIENT ASSET EQUITY ACCOUNT	216	1.00
SSBTC CLIENT OMNIBUS ACCOUNT	212	0.98

Map of bases as of March 31, 2020

We have approx. 40 domestic sales and service bases to deliver sophisticated customer services.

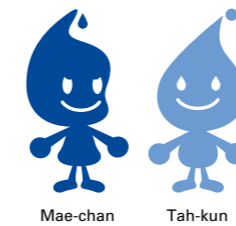


“META” in the corporate name “METAWATER” is a prefix representing “transcendence” or “transformation.”

It symbolizes our desire to be a company that evolves continuously to hand down “WATER,” an indispensable resource, to people in the future generations.

The line vertically intersecting the logo in the center represents the role of METAWATER and its advanced technologies and products.

The deep blue on the left symbolizes “water before purification” and the clear blue on the right represents “water after purification and regeneration.”



Corporate Characters

To symbolize our corporate identities, we have mascot characters called “Mae-chan” and “Tah-kun.” The synergetic growth of “Mae-chan,” representing natural water, and “Tah-kun,” representing purified water, symbolizes the growth and symbiosis of METAWATER with the environment.

Issuing the “METAWATER REPORT 2020”

As a good partner of the water supply and sewage industry, METAWATER Group contributes to the sustainability of the water supply and sewage systems in cooperation with the local community. Further, METAWATER is proactively engaged in social contribution activities including environmental preservation as a corporate citizen to realize a sustainable society and preserve the global environment. We have issued this report to communicate the entire picture of our group in an easy-to-understand manner. Besides our corporate mission and business details, it offers comprehensive and concise information about our activities including the following: Financial information such as changes in performance and mid-term management plan for water management business in future; and CSR activities not listed in the financial statements and non-financial information such as social contribution activities as a part of CSR activities.

• Period in the scope of reporting

The performance for FY2019 (fiscal year ending March 2020) is the main scope for this report. However, some events in this report may have occurred before or after this period.

• Reference guidelines

- ISO26000 (International Standard of Social Responsibility issued in November 2010)
- Ministry of Environment: Environmental Reporting Guidelines (Version 2018)
- International Integrated Reporting Council (IIRC): International Integrated Reporting Frameworks
- GRI Sustainability Reporting Guideline Version 3.1 (G3.1), Version 4 (G4)
- United Nations Global Compact